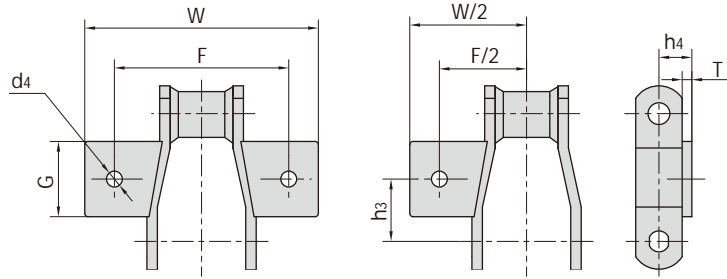


With K1 attachments

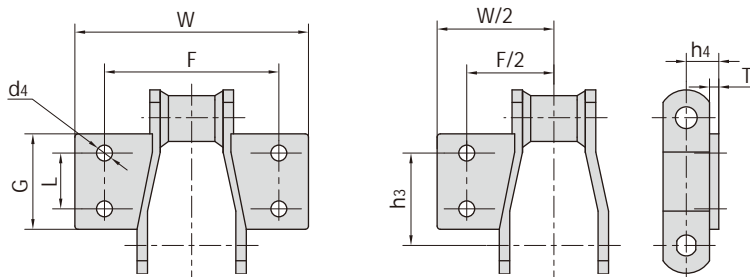
With A1 attachments



ChainNo.	h_3 mm	G mm	F mm	W mm	h_4 mm	d_4 mm	T mm
WR78	31,8	36,6	101,6	130,0	22,4	9,7	6,4
WH78							
WR82	38,1	46,0	106,7	142,7	23,9	9,7	6,4
WH82							

With K2 attachments

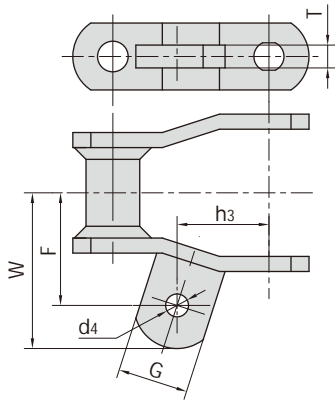
With A2 attachments



Chain No.	L mm	G mm	h_3 mm	F mm	W mm	h_4 mm	d mm	T mm
WR78	28.4	52.3	36.9	101.6	127.0	22.4	9.7	6.4
WH78								
WR82	33.3	62.0	52.3	108.2	136.6	23.9	9.7	6.4
WH82								
WR110	44.4	84.1	98.6	135.1	168.1	28.58	9.7	9.7
WH110								
WR111	58.7	90.4	89.9	159.0	193.5	31.75	12.7	9.7
WH111								
WR124	49.3	77.7	71.4	133.6	162.8	28.58	9.7	9.7
WH124								
WR124H	49.3	80.8	73.2	133.6	165.6	38.1	12.7	12.7
WH124H								
WR132	69.8	80.8	106.2	190.5	233.2	38.1	12.7	12.7
WH132								

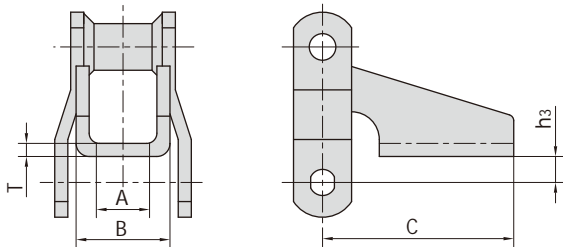
Welded Steel Chain Attachment

With A22 attachments



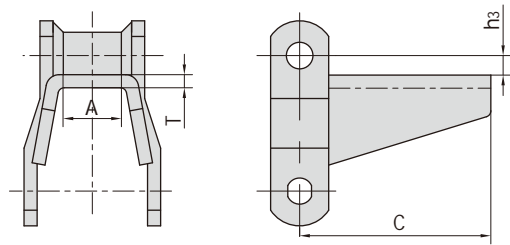
Chain No.	h_3 mm	G mm	F mm	W mm	d mm	T mm
WR78	33.3	30	47.8	65	9.7	9.7
WH78						

With H1 attachments



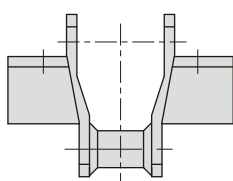
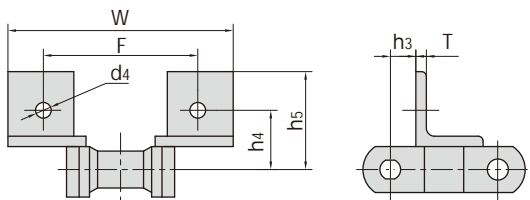
Chain No.	h_3 mm	A mm	B mm	C mm	T mm
WR78	12.7	31.7	50.8	92.2	6.4
WH78					
WR82	16.0	38.0	57.2	92.2	6.4
WH82					

With H2 attachments



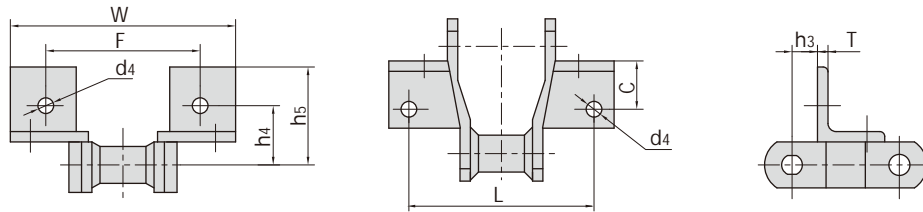
Chain No.	h_3 mm	A mm	C mm	T mm
WR78	7.9	20.8	93.5	6.4
WH78				
WR82	7.9	26.4	96.8	6.4
WH82				

With F2 attachments



Chain No.	h_3 mm	h_4 mm	h_5 mm	F mm	W mm	d mm	T mm
WR78	15.7	36.6	60.5	95.5	138.2	9.7	6.4
WH78							
WR82	15.7	45.97	60.5	104.9	150.9	10.4	6.4
WH82							

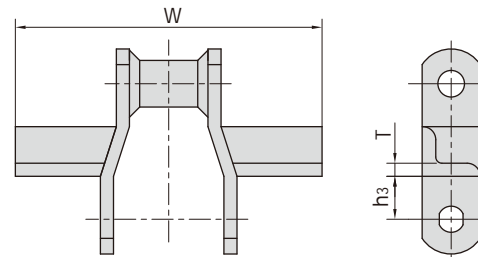
With F4 attachments



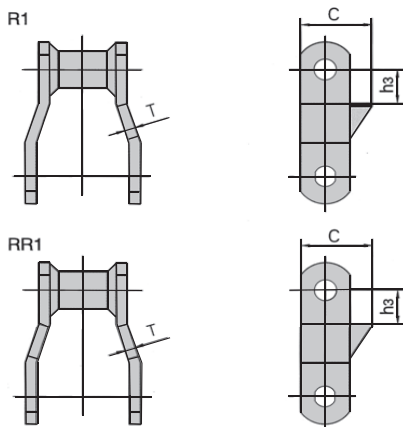
Chain No.	<i>h3</i> mm	<i>h4</i> mm	<i>h5</i> mm	<i>L</i> mm	<i>C</i> mm	<i>F</i> mm	<i>W</i> mm	<i>d</i> mm	<i>T</i> mm
WR78	17.3	44.4	60.5	114.3	31.8	95.2	141.2	9.7	6.4
WH78									
WR82	20.6	43.2	62.0	127.0	28.4	104.6	150.9	9.7	6.4
WH82									
WR124	22.4	52.3	73.2	133.6	36.6	111.3	157.0	9.7	9.7
WH124									

Chain No.	<i>h3</i> mm	<i>W</i> mm	<i>T</i> mm
WR78	19.1	153.9	6.4
WH78			
WR82	23.9	166.6	6.4
WH82			
WR124	30.0	217.4	6.4
WH124			
WR124H	35.1	217.4	9.7
WH124H			
WR132	38.1	316.0	9.7
WH132			

With W1 attachments

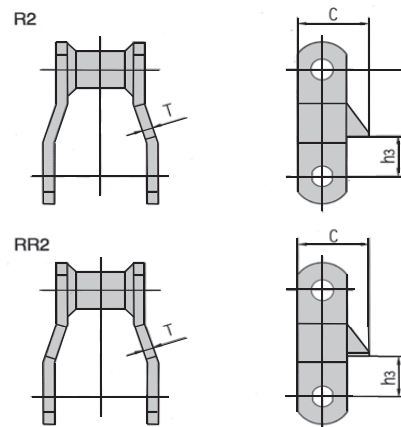


With R1 & RR1 attachments



Chain No.	<i>h3</i> mm	<i>C</i> mm	<i>T</i> mm
WR78	17.3	41.1	6.4
WH78			
WR82	22.4	49.3	6.4
WH82			
WR124	31.8	49.3	9.7
WH124			

With R2 & RR2 attachments



Chain No.	<i>h3</i> mm	<i>C</i> mm	<i>T</i> mm
WR78	17.3	41.1	6.4
WH78			
WR82	22.4	49.3	6.4
WH82			
WR124	31.8	49.3	9.7
WH124			