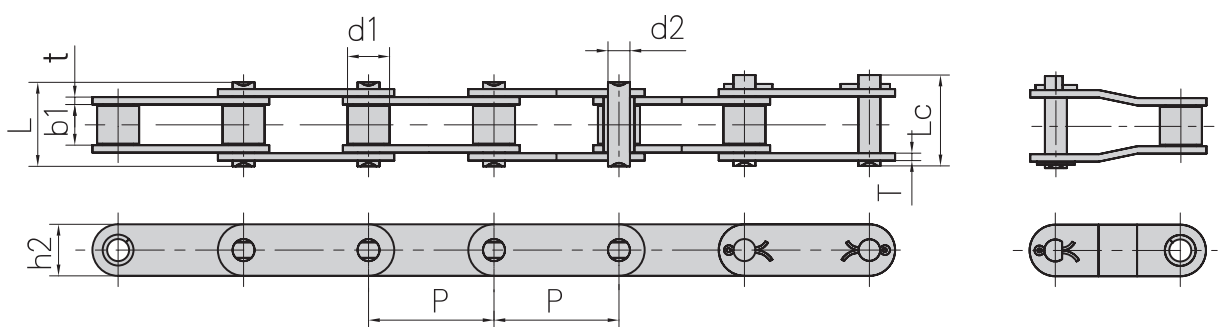


# CA Type Agricultural Chain



Chain ref.	Pitch	Roller diameter	Width between inner plates	Pin diameter	Pin length		Inner plate height	Plate thickness	Ultimate tensile strength	Average tensile strength	Weight per meter
	P	d1 max	b1 min	d2 max	L max	Lc max	h2 max	t/T max	Q min	Q0 min	q
	mm	mm	mm	mm	mm	mm	mm	mm	kN/LB	kN	kg/m
CA2060H	38,10	11,91	12,70	5,94	29,2	31,6	18,00	3,25	31,10/6996	40,5	1,45
CA2063H	38,10	11,89	12,70	5,94	29,4	34,2	19,30	3,25	31,28/7109	40,5	1,65
CA550	41,40	16,87	19,81	7,19	35,0	38,0	19,30	2,80	39,10/8886	51,2	1,94
CA550H	41,00	16,74	20,00	7,14	36,0	39,1	19,10	3,00	57,82/13000	60,8	2,00
CA550V	41,40	16,80	19,05	8,28	36,1	39,1	22,00	3,00	55,00/12499	68,7	2,24
CA555	41,40	16,87	12,70	7,19	29,1	32,0	19,30	3,10	39,10/8886	56,0	1,72
CA557	41,40	17,78	20,24	8,00	37,4	40,6	23,10	3,10	55,61/12639	74,3	2,60
CA624	41,40	15,88	19,05	8,28	36,1	39,1	20,50	3,00	50,00/11363	62,5	2,17
CA620	42,01	17,91	24,51	7,19	41,8	45,2	20,20	3,25	39,10/8886	55,1	2,35
38,4R	38,40	15,88	19,05	6,92	33,4	36,3	17,30	2,50	33,00/7480	41,2	1,70
38,4V	38,40	15,88	18,00	6,92	34,8	37,8	17,30	3,00	40,00/9091	50,0	1,83
38,4VB	38,40	15,88	19,05	8,28	36,1	39,4	20,50	3,00	50,00/11363	62,5	2,17
55VD	41,40	17,90	23,00	8,22	39,3	42,4	20,00	2,80	42,00/9546	45,0	2,34

Standard execution zinc plated.